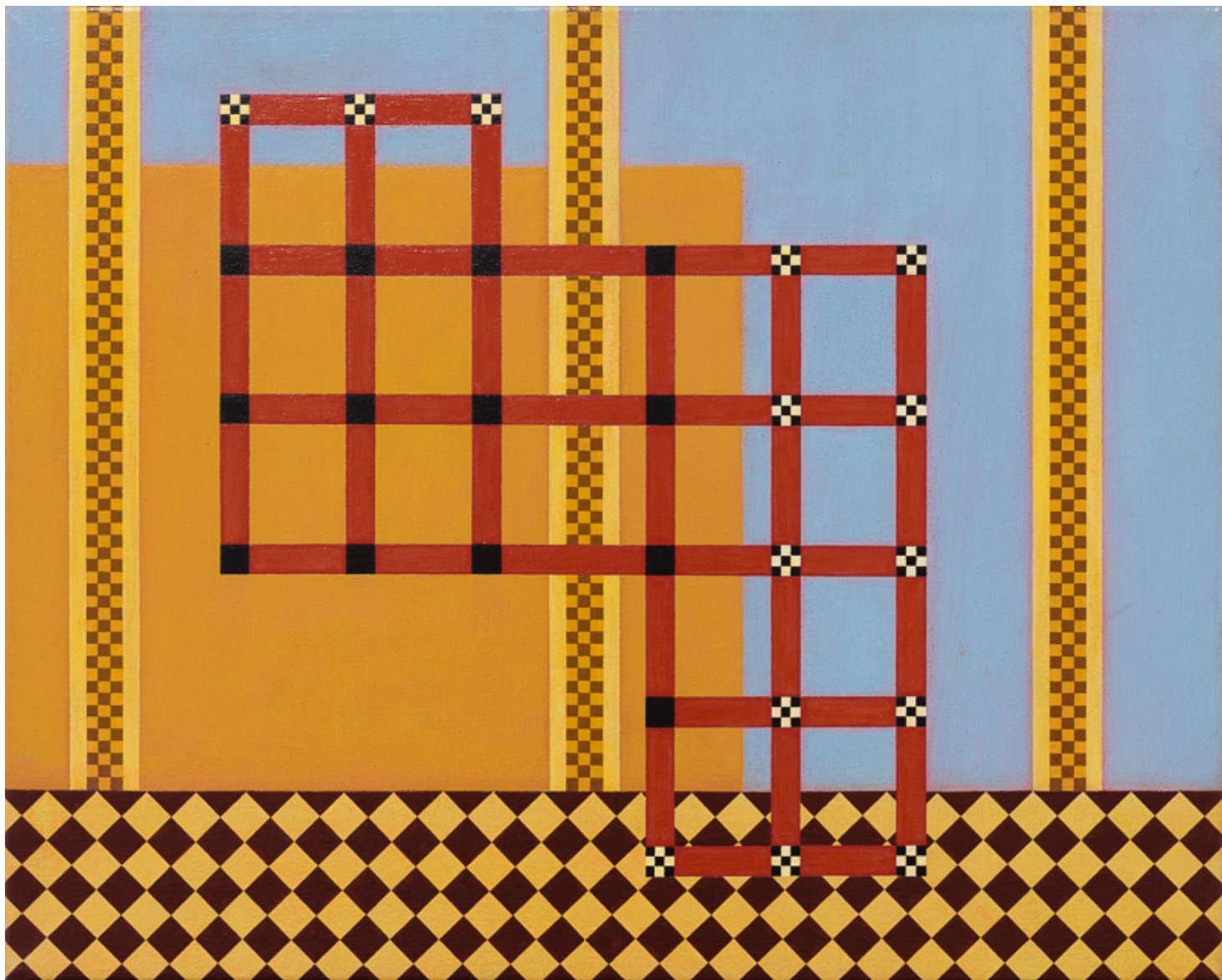


# Andrew Christofides - New Work





*(2,3,5) x 15 Rotations*  
acrylic on canvas  
40.5x35.5cm  
\$2420  
photograph by docQment

# Andrew Christofides - New Work

Exhibition dates 1 - 26 March 2016

King Street Gallery  
on William

10am – 6pm Tuesday – Saturday

177 William St Darlinghurst NSW 2010 Australia

T: 61 2 9360 9727 F: 61 2 9331 4458

art@kingstreetgallery.com www.kingstreetgallery.com.au

front cover *Paphos* acrylic on canvas 41x51cm \$2750 photograph by docQment

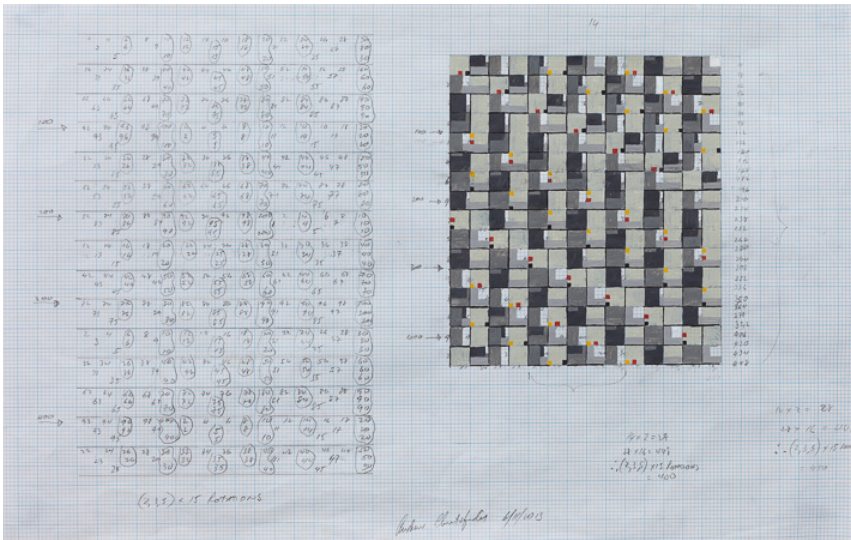
## Andrew Christofides -New Work

The work in this exhibition continues the artist's exploration of the language of Pure Abstraction and in particular that of Geometric Abstraction: An aesthetic close to Andrew Christofides' heart.



*He sees geometry as a metaphor for seeing and responding to the world in a particular way.*





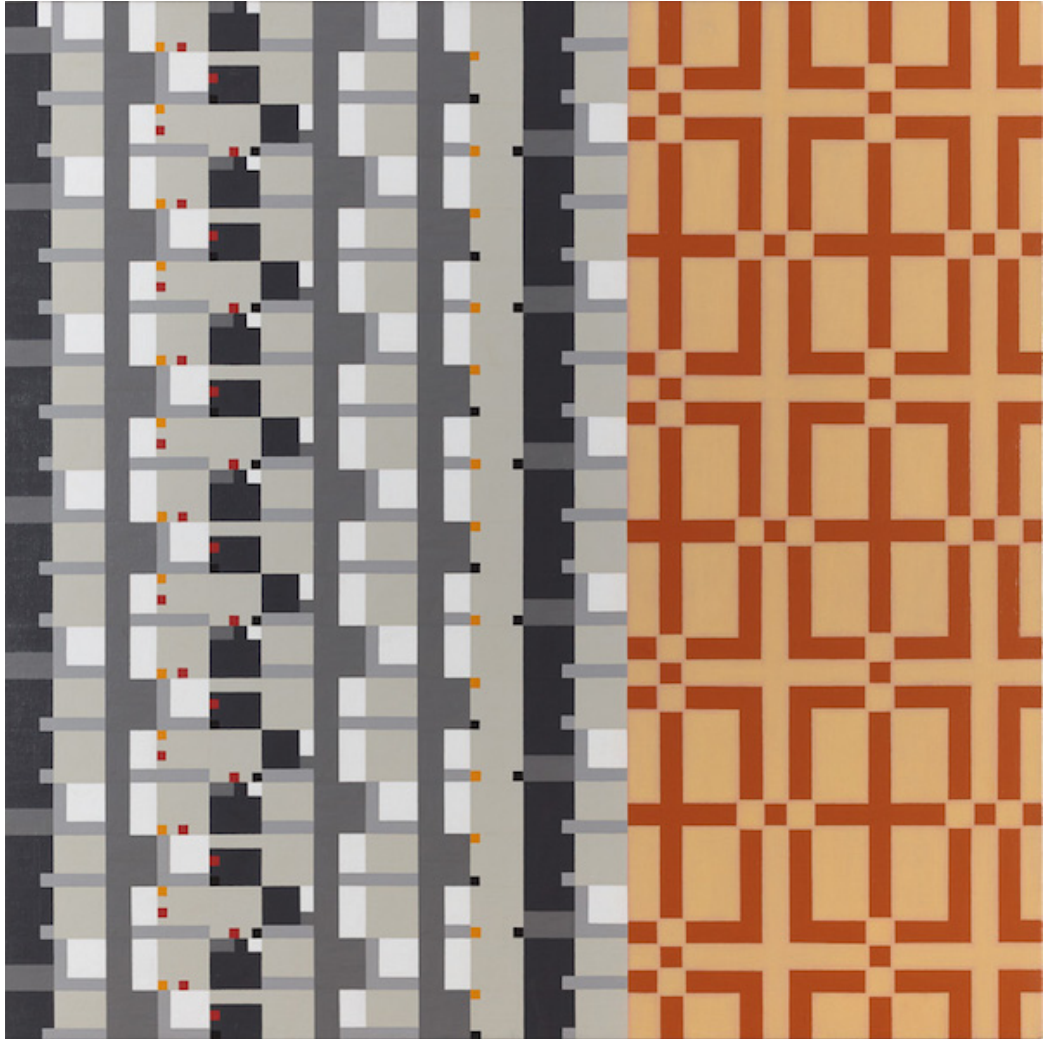
far left  
*Study for Acts of Faith*  
 acrylic, ink & pencil on graph paper  
 29x42cm  
 \$1320

left  
*Study for (2,3,5) x 15 Rotations*  
 acrylic, ink & pencil on paper  
 20x43cm  
 \$1320

photographs by docQment

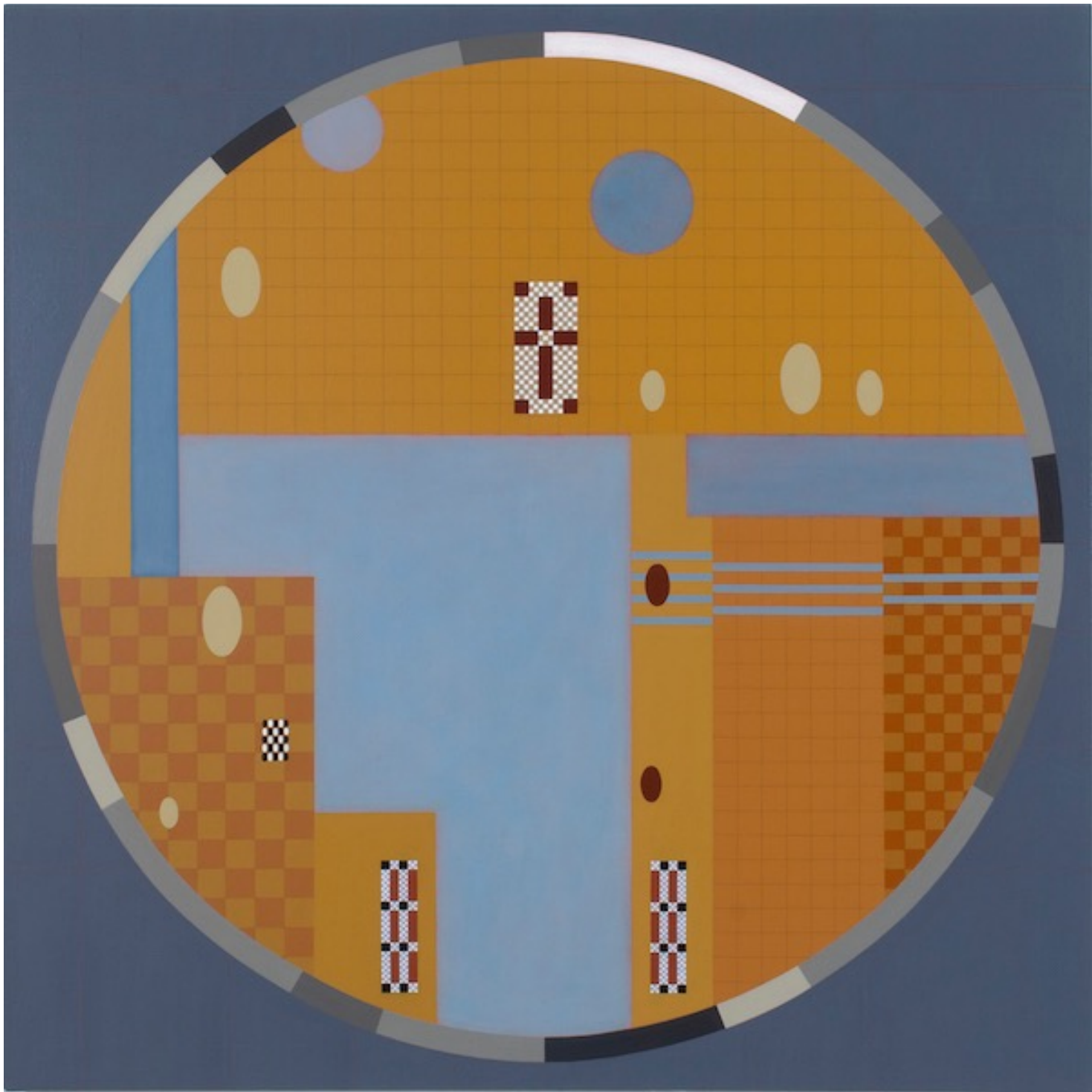
Geometry and geometric abstraction deal with stripped down structures and simple visual and numeric relationships, relationships that do not speak of the real world as we normally see it, but rather as a set of underlying structures and relationships that can be seen as an essence of our experiences and our surroundings.

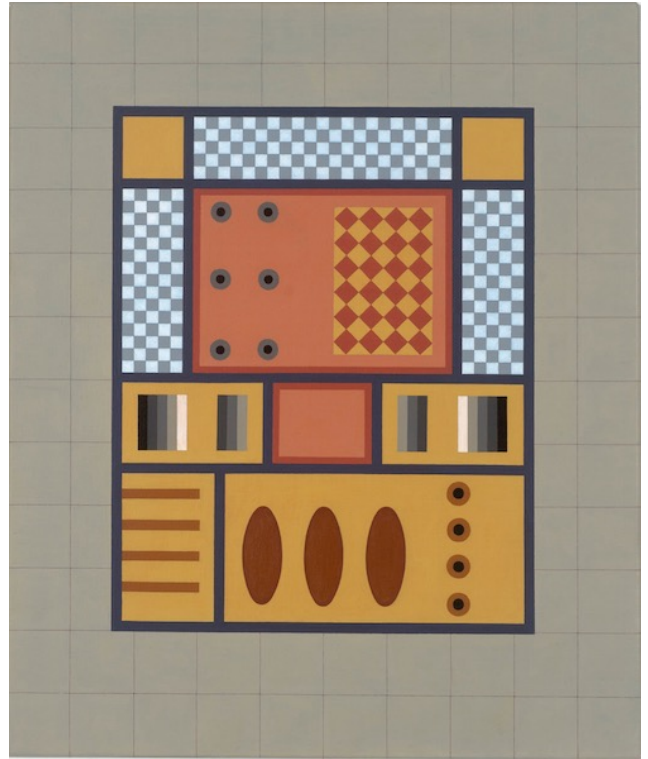
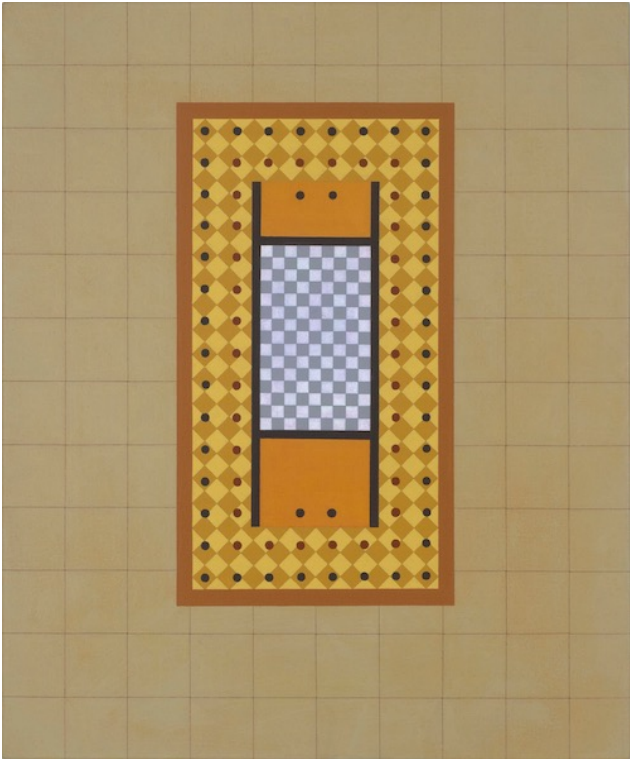
*Acts of Faith*  
acrylic on canvas  
76x76cm  
\$5500  
photograph by docQment



*Mare Mediterranean*  
acrylic on canvas  
112x112cm  
\$8800  
photograph by M Brouet



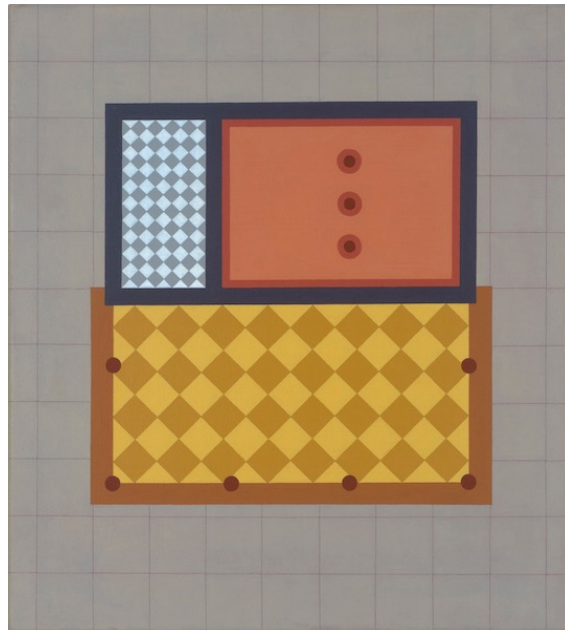




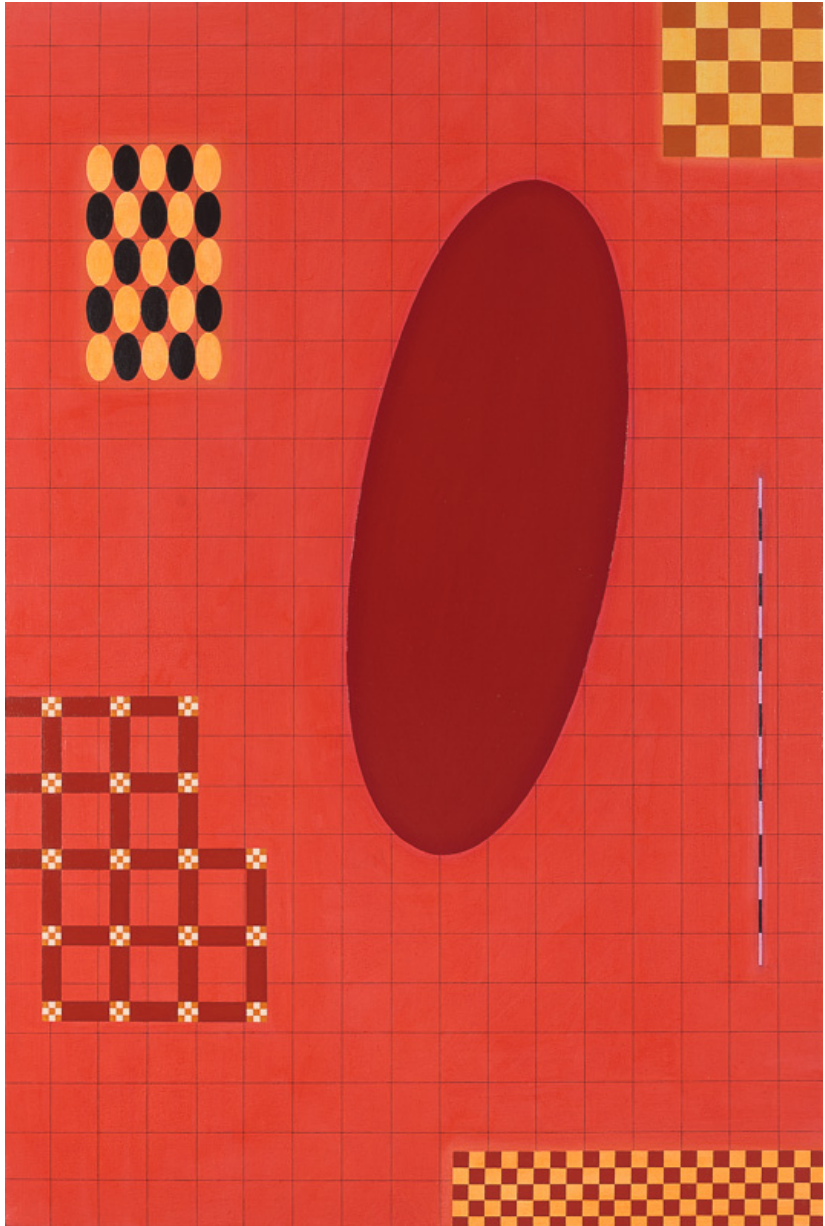
far left  
*Eternal Space II*  
acrylic on canvas  
61x51cm  
\$3300

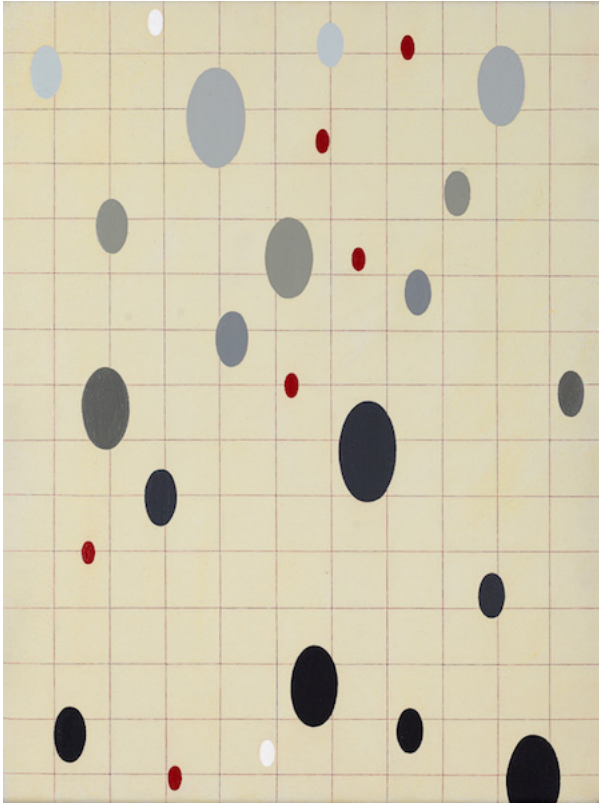
middle left  
*Eternal Space III*  
acrylic on canvas  
61x51cm  
\$3300

right  
*Eternal Space I*  
acrylic on canvas  
56x51cm  
\$3300



photographs by M Brouet





far left  
*Things left behind*  
acrylic on canvas  
76x51cm  
\$4400  
photograph by docQment

left  
*Fading*  
acrylic on canvas  
41x30.5cm  
\$2310  
photograph by douQment







*Piazza*

acrylic on canvas

198x183cm

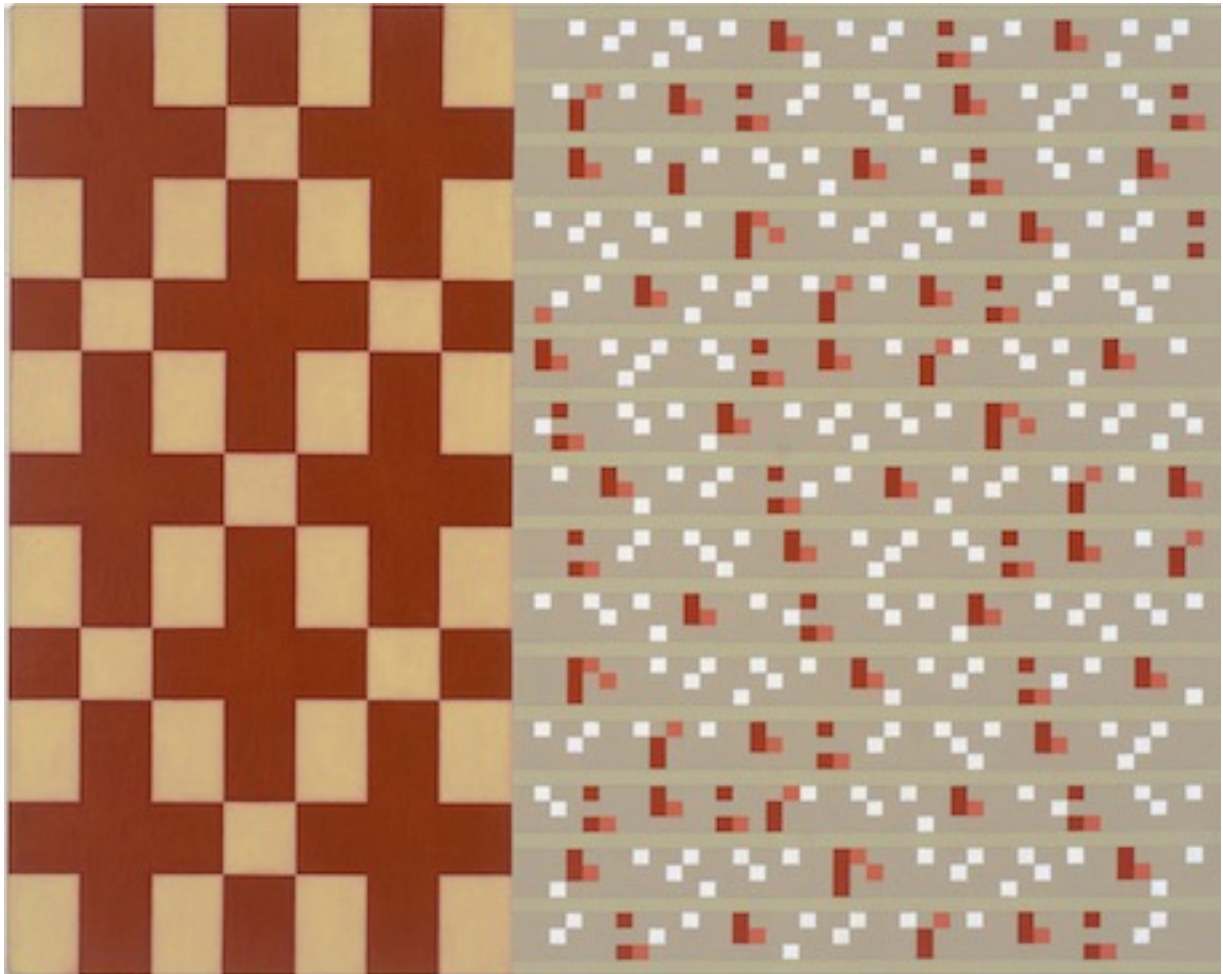
\$15,400

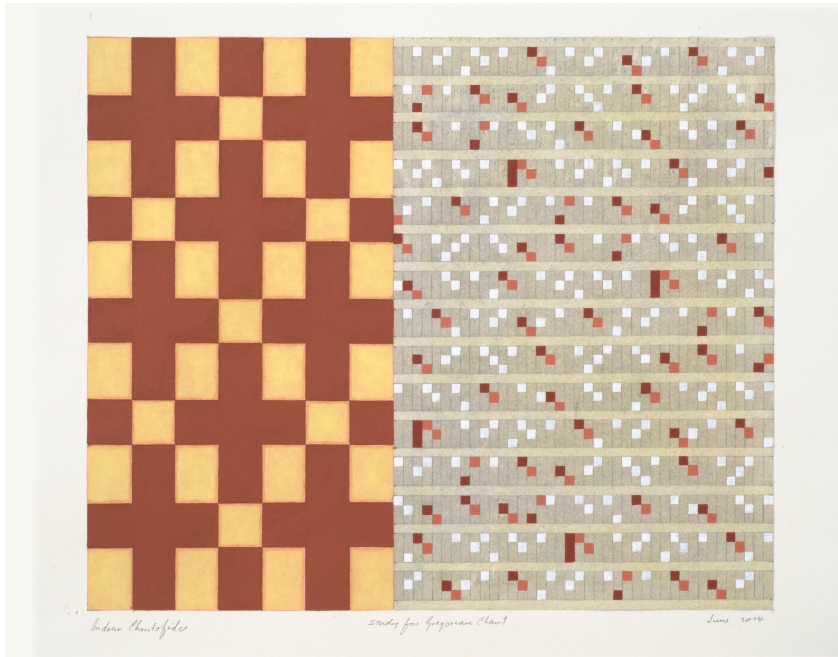
photograph by M Brouet





*Studio Constellation* [diptych]  
acrylic on canvas  
244x326cm  
\$24,200  
photograph by M Brouet

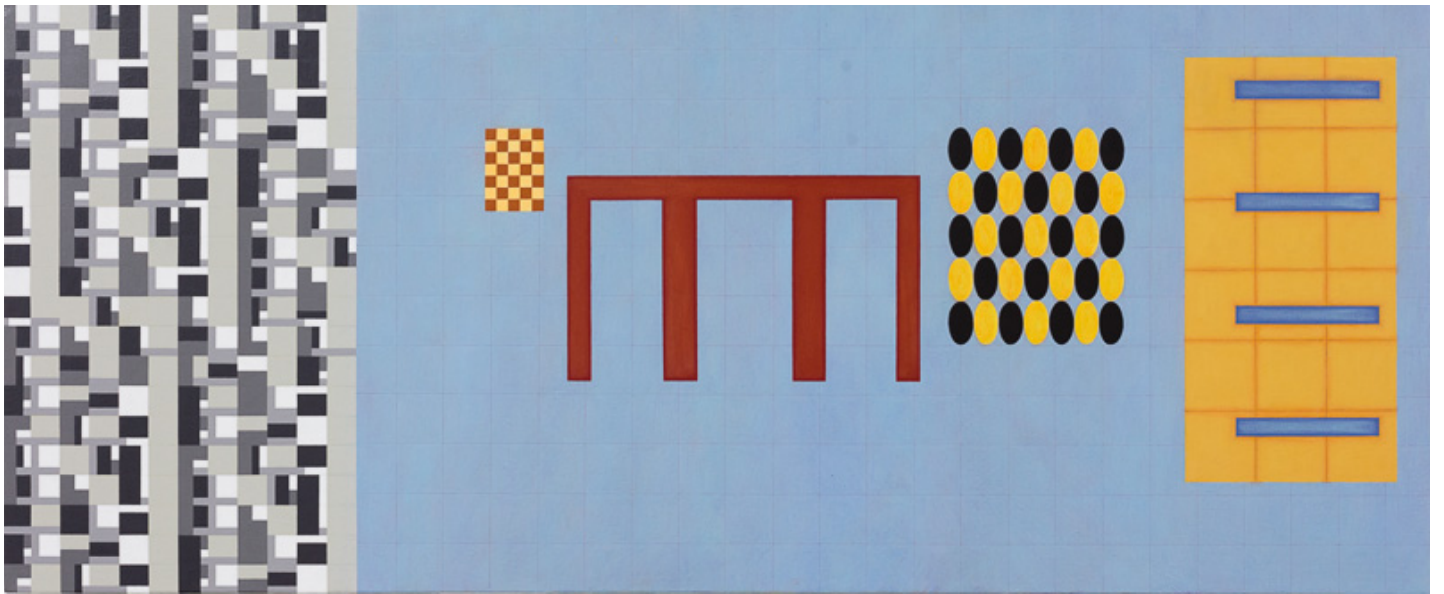




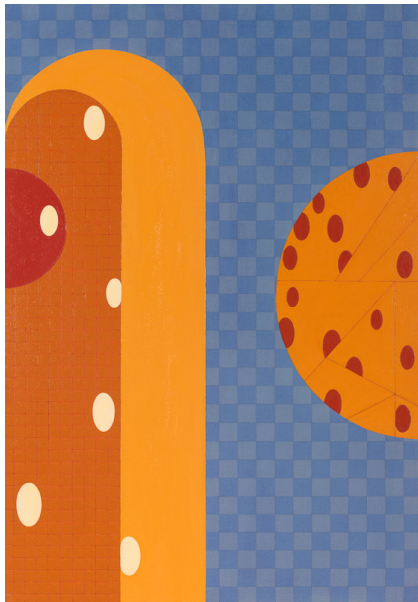
far left  
*Gregorian Chant*  
acrylic on canvas  
61x76cm  
\$5500

left  
*Study for Gregorian Chant*  
acrylic & watercolour on paper  
30x36cm  
\$1650

photographs by M Brouet







far left

*Towards Intuition*  
acrylic on canvas

50.5x121cm

\$5500

left

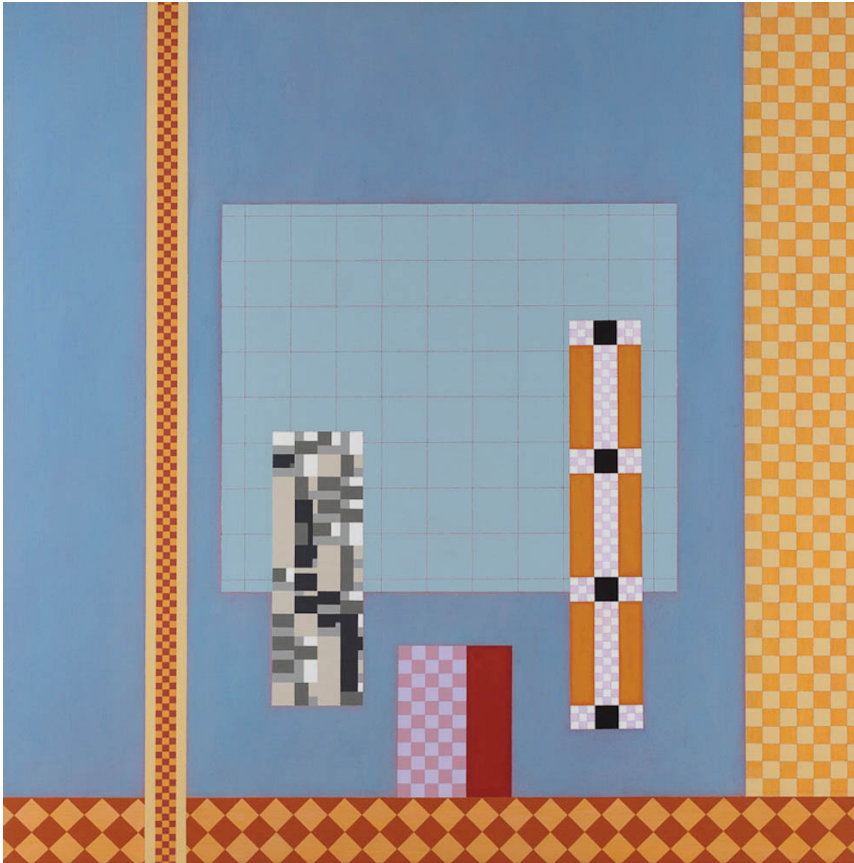
*Western Gate*

acrylic on canvas

50.5x35cm

\$2750

photographs by docQment



left

*View*

acrylic on canvas

76x76cm

\$5500

photograph by docQment

right

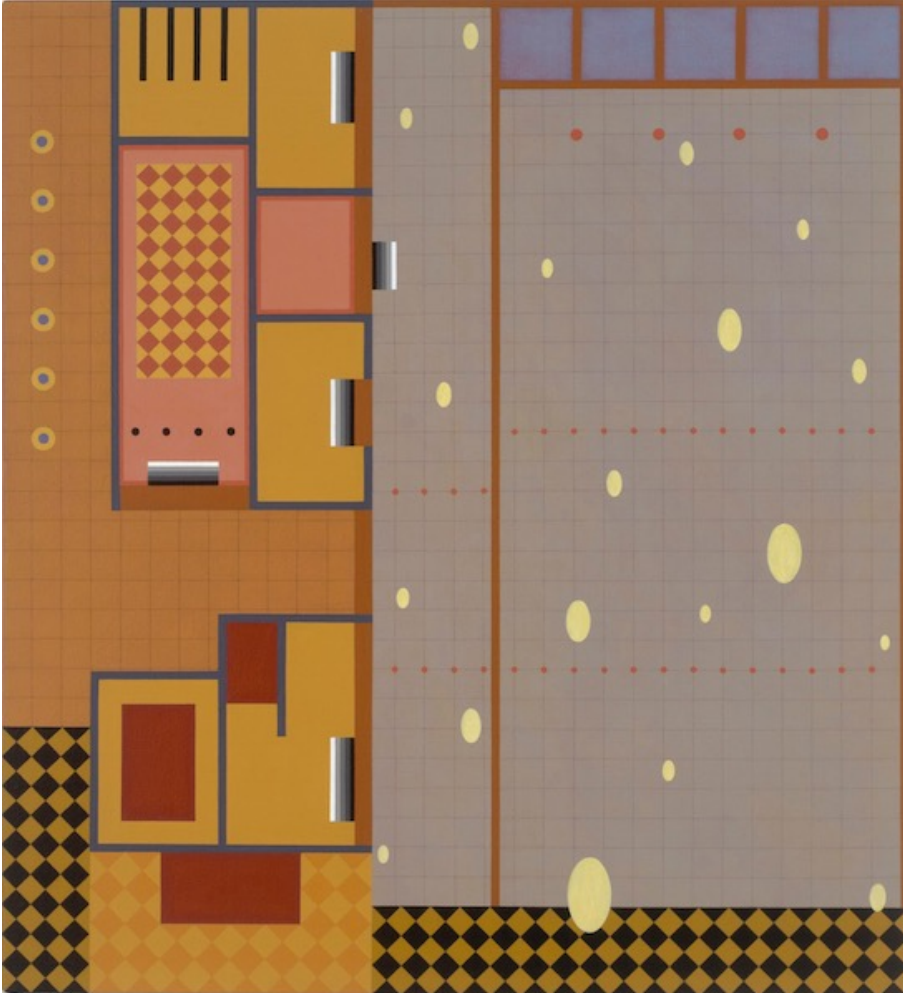
*Small Piazza*

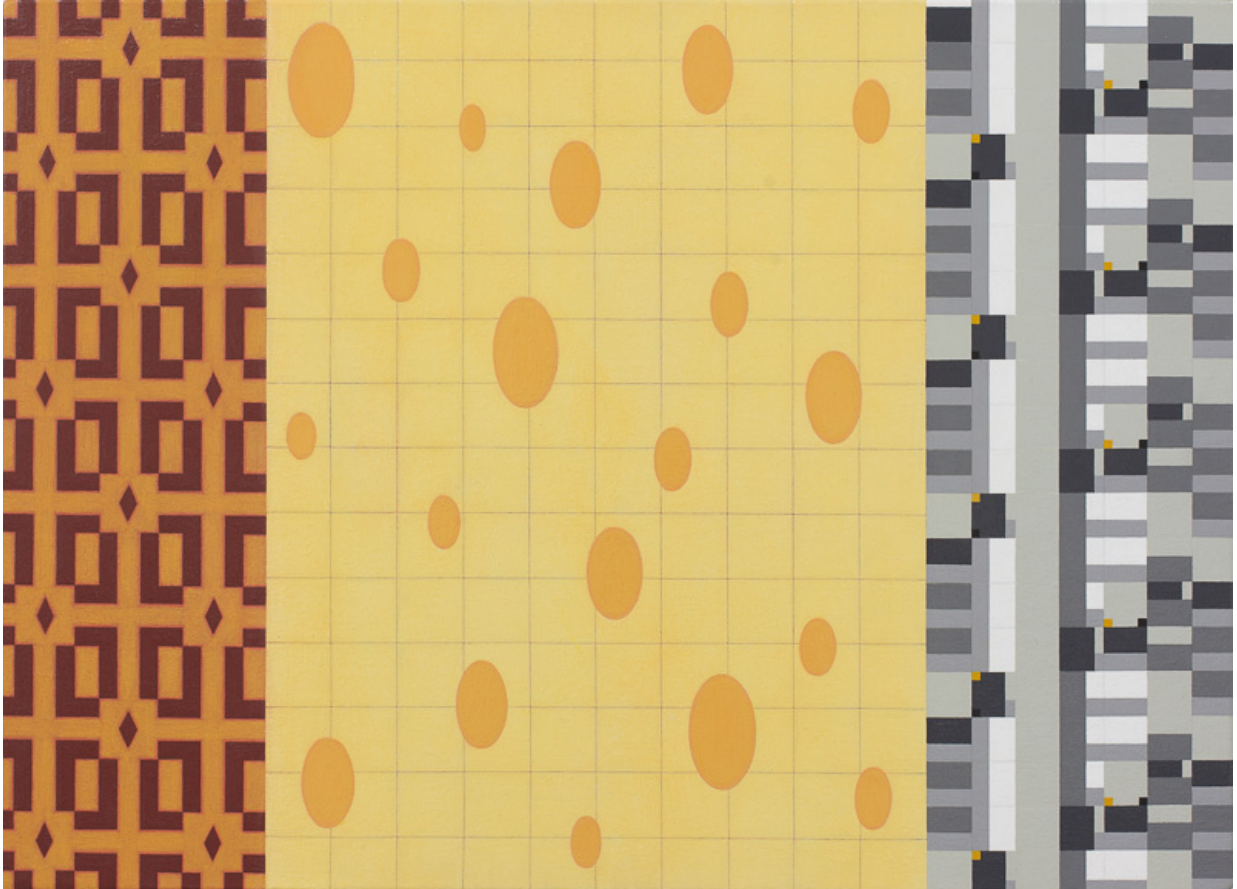
acrylic on canvas

83.5x76cm

\$5500

photograph by M Brouet





left

*The Space Between*

acrylic on canvas

40.5x55.5cm

\$2750

photograph by docQment

right

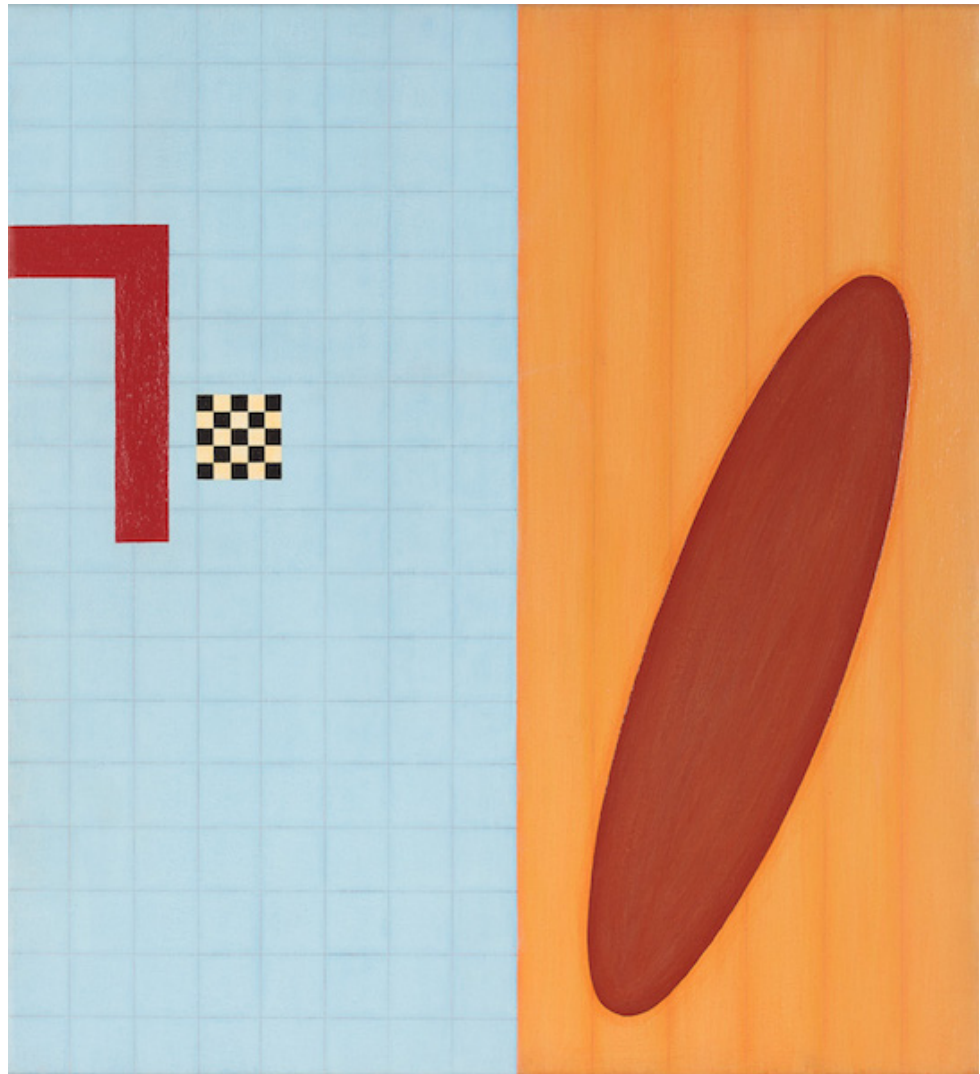
*Parallel Universe*

acrylic on canvas

51x46cm

\$2750

photograph by docQment





....'Over the past decade or so I have sought to introduce new imagery and visual elements so as to extend the range of visual vocabulary within my work. In this exhibition elements have been sourced intuitively, through my personal experiences and personal background, as well as rationally through numeric and geometric explorations.

Furthermore, I continue to believe in the power, beauty and uniqueness of paintings to act as conduits for the viewer's imagination'.

Andrew Christofides 2016



*Study for Parallel Universes*  
watercolour & acrylic on paper  
25x23.5cm  
\$1100  
photograph by docQment



*Study for Studio Constellation*  
ink, watercolour & acrylic on paper  
33.75x45cm  
\$2200  
photograph by M Brouet





King Street Gallery  
on William

Andrew Christofides Studio