

---

# KALLIOPE calliope

NICOLA HENSEL & JOHN TURIER



Maitland Regional Art Gallery is a service of Maitland City Council and supported by the NSW Government through Create NSW.

John Turier is represented by King Street Gallery on William.



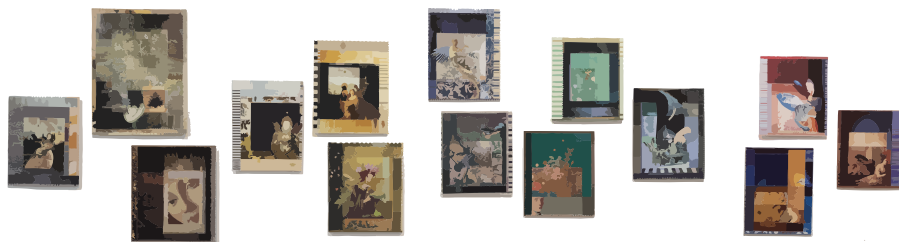
# KALLIOPE calliope

---

**NICOLA HENSEL & JOHN TURIER**  
ON EXHIBITION UNTIL 16 FEBRUARY 2020  
AT MAITLAND REGIONAL ART GALLERY

---

# NICOLA HENSEL

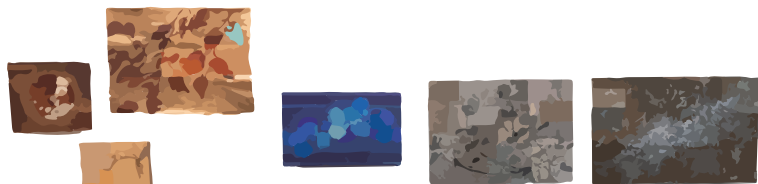


## MIDWIVES FOR A NEW WORLD

2019, collages, dimensions variable

## I SAW A THOUSAND THINGS

2019, posca pens, 270 x 270cm



## MAPS FOR THE EVER-RENEWABLE HEART

### ARCHIPELAGO OF THE BROKEN

2019, pencil, ink, gouache on paper, 55 x 63cm

### ALL ROADS LEAD TO STARTING OVER

2019, charcoal and fabric on paper, 38 x 61cm

### THE ENDLESS GENEROSITY OF AIR AND LIGHT

2019, bronze pigment on paper, 82 x 114cm

### THE GRAND CONTINUUM OF KINDNESS

2019, pencil, ink, gouache on paper, 59 x 95cm

### (EVERYTHING AND NOTHING)

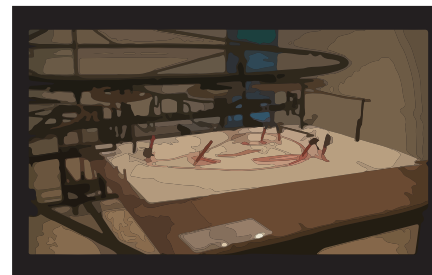
2019, ink on paper, 83 x 115cm

### THE MILKY WAY OF THE FALLEN

2019, ink, gouache on paper, 85.5 x 135cm

---

# MEDIA



## JACK HILL – JOHNNY BAKELITE

Duration: 2:59

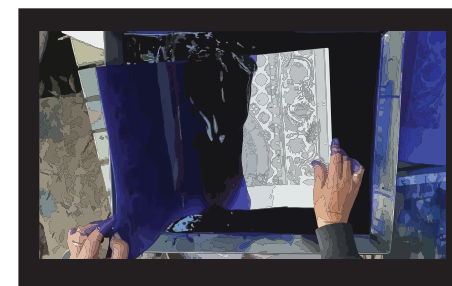
## MY MAMA SAID – JOHNNY BAKELITE

Duration: 4:10

Both tracks from  
*Johnny Bakerlite - 'Thinking Out Loud'*  
Available in the Gallery Shop

## NEVER NEED ARTIST AGAIN MACHINE IN ACTION (DRAWING MACHINE)

Video produced by Isaac Turier  
Music: Tom Waits, *Sea of Love*



## KALLIOPE CALLIOPE

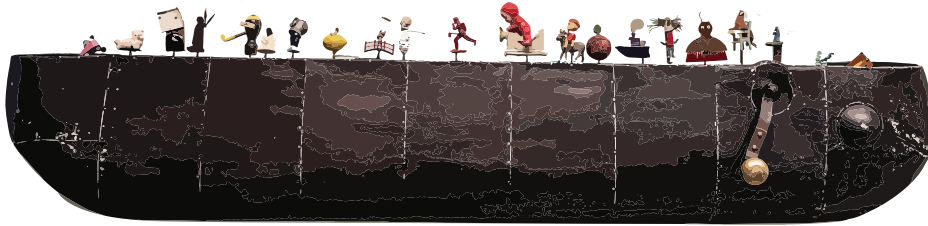
Duration: 4:04

Video produced by  
Oliver Harlan for Maitland  
Regional Art Gallery

KALLIOPE  
CALLIOPE

---

# NICOLA HENSEL & JOHN TURIER



## EVERY DAY ANOTHER MIRACLE

2019, steel, found objects, aluminium, 70 × 272 × 39cm



## KALLIOPE CALLIOPE

2019, found objects, 98 × 266 × 20cm



## A LETTER TO LOVE

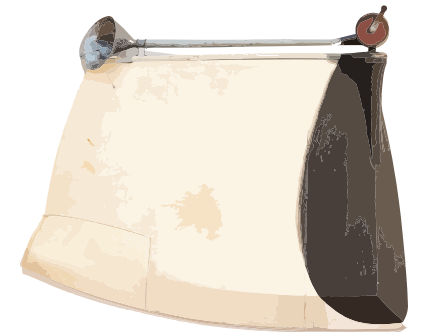
2019, graphite on paper  
115 × 148cm

## JOHN

2015, graphite on paper  
18 × 19cm

---

# JOHN TURIER



(left to right)

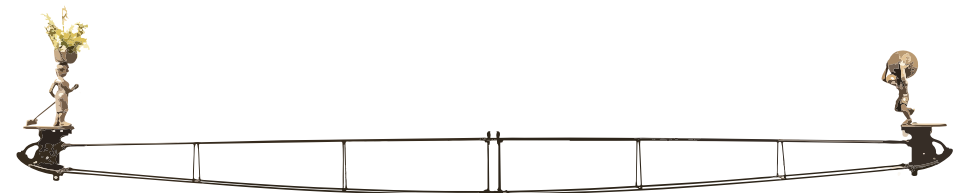
## ANNIE OAKLEY

2019, timber 110 × 110 × 15cm

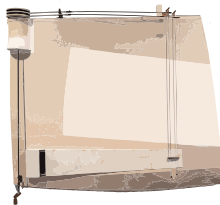
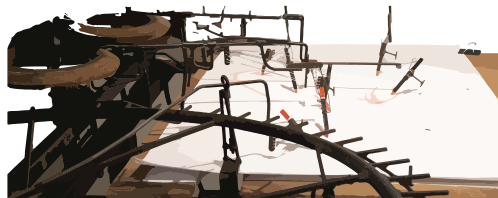
## BUFFALO BILL

2013, timber 140 × 140 × 15cm

**BLURTA**, 2013, aluminium, canvas,  
timber, steel, 132 × 161 × 36cm



# JOHN TURIER



## NEVER NEED ARTIST

**AGAIN MACHINE**, 2005,  
steel, wire, timber, pencils  
154 × 432 × 489cm

Drawings available for purchase

## KLANGA

2013, piano wire, steel, canvas,  
timber, stone, 126 × 140 × 26cm

(left to right)

**TED**, 2019, bronze, lawn bowl  
24 × 12 × 12cm

**RALPH**, 2019, bronze, lawn bowl,  
30 × 12 × 12cm

**FRANK**, 2019, bronze, lawn  
bowl, 27 × 12 × 12cm

**DOUG**, 2019, bronze, lawn bowl,  
29 × 12 × 12cm



(left to right)

## THE GOLDEN PROMISE

2019, bronze, timber, copper, goldleaf, 53 × 27 × 27cm

**BETWEEN GODS**, 2019, bronze, copper, timber, stone, 62 × 45 × 11cm

**PINNACLE**, 2019, timber, stone, bronze, 49 × 26 × 23cm

**LOST IN TRANSIT**, 2019, bronze, timber, steel, 31 × 109 × 14cm



## NATURAL SELECTION

2019, bronze, marble, steel, slate,  
47 × 137 × 20cm



## FOREVER ONLY NOW

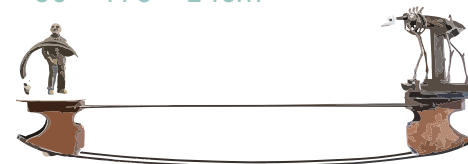
2019, bronze, marble,  
steel, 43 × 44 × 20cm



**LUMMOX**, 2019,  
bronze, latex, canvas,  
leather, timber, steel,  
60 × 61 × 21cm

## THE ENLIGHTENMENT

2019, bronze, marble, steel, slate  
60 × 173 × 24cm



## MOANER

2019, steel, drum  
skin, violin bow, guitar string  
477 × 27 × 73cm



(left to right)

**FLAT EARTH**, 2019, bronze,  
slate, timber, stone,  
37 × 26 × 25cm

**BAMBI**, 2019, bronze, marble,  
timber, canvas, 78 × 31 × 24cm

**PLATEAU**, 2019, bronze, timber,  
stone, 30 × 22 × 22cm