

# PAUL SELWOOD

Selected sculpture

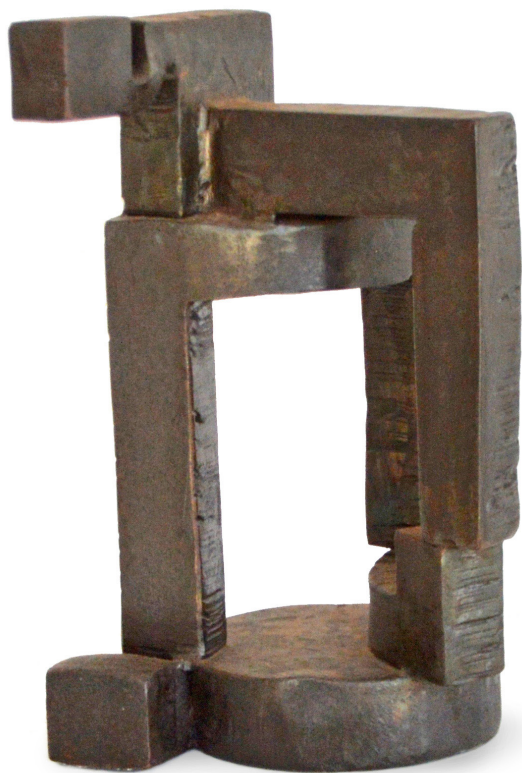
3 – 28 September 2019



@kingstreetgallery

King Street Gallery  
on William

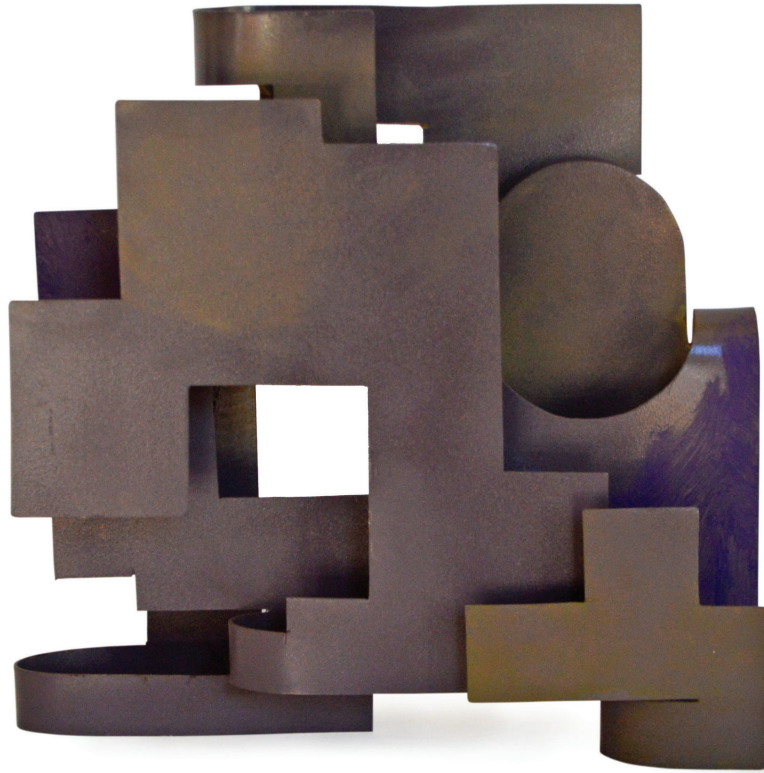




*Archway* 2004 waxed steel 25 x 14 x 15 cm



*Benin bird* 2011 waxed steel 57 x 13 x 20 cm



*Berlin beat* 2014 painted & mixed media stainless steel 30 x 31 x 12 cm



*Bird song* 2005 waxed steel 32 x 6.5 x 11 cm



*Bronze leaves* 1988 painted steel 70 x 88 x 12 cm



*Crevice* 1999 waxed steel 20.5 x 14 x 6 cm



*Four figures* 1999 waxed steel 15 x 15 x 5.5 cm





*Maquette* 2019 painted & mixed media stainless steel 21 x 18 x 21.5 cm



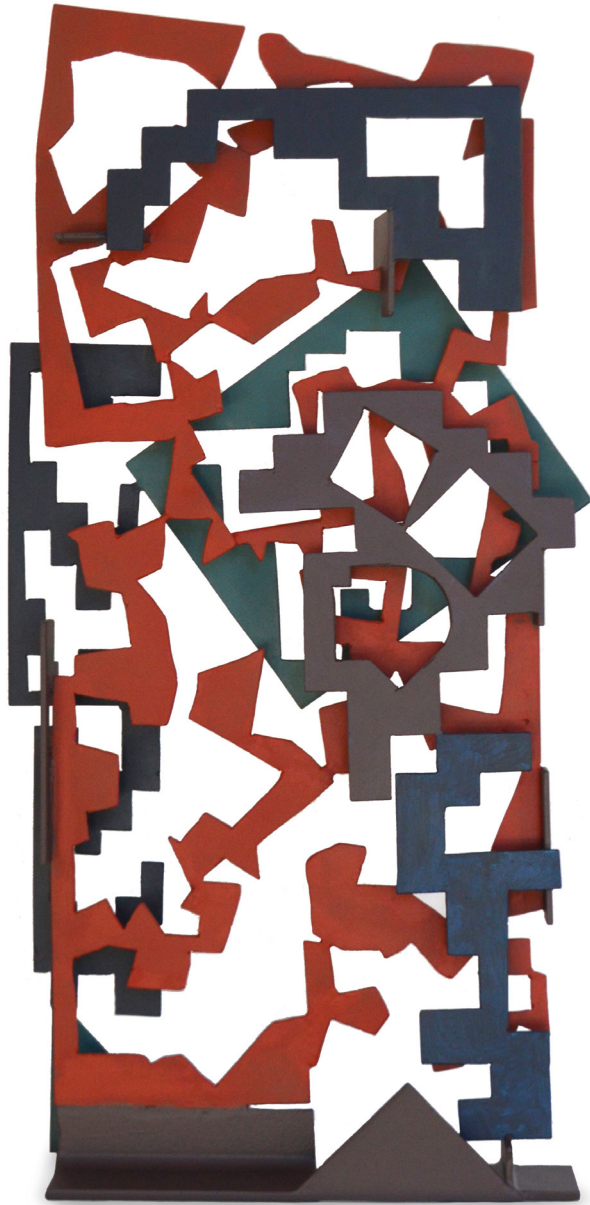
*Off minor* 2014 painted & mixed media stainless steel 20 x 21 x 20 cm



*Pastoral* 2019 waxed steel 40 x 23 x 14.5 cm



*Roy's song* 2015 varnished steel 56.5 x 29 x 11 cm



*Screen piece* 2019 painted steel 114.5 x 58 x 18 cm



*Siena* 2006 waxed steel 22 x 14.4 x 18 cm

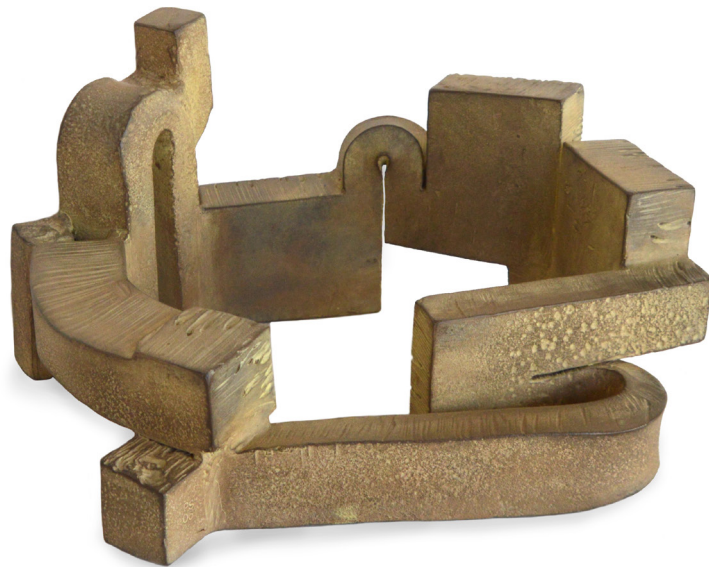


*Sun clock* 2006 waxed steel 33.5 x 32 x 18 cm

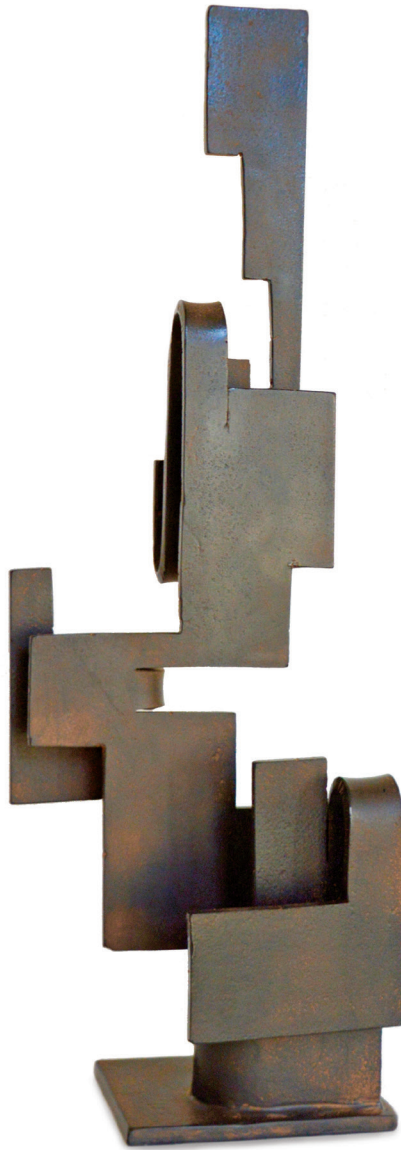


*Three figures* 2000 waxed steel 13 x 12 x 5 cm

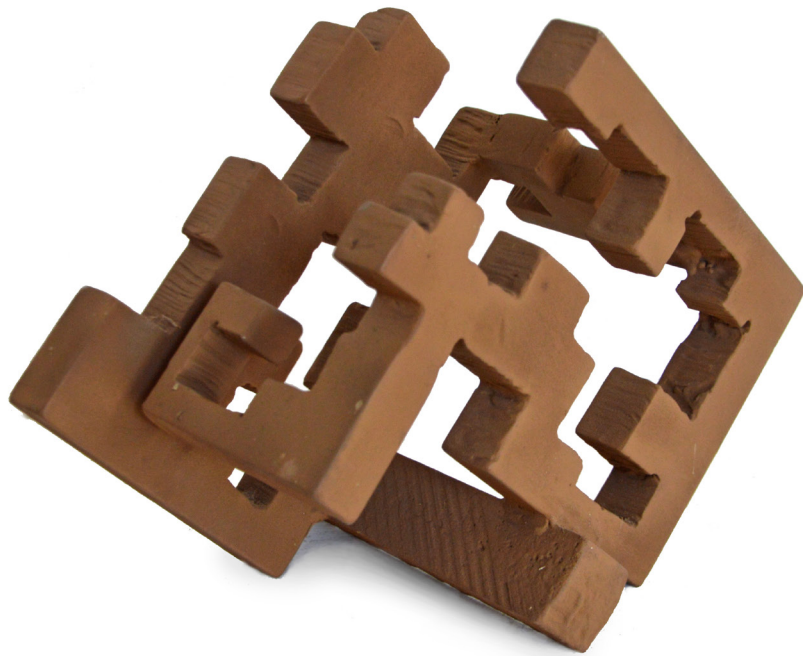




*Town centre* 2005 waxed steel 19 x 37.5 x 30.5 cm



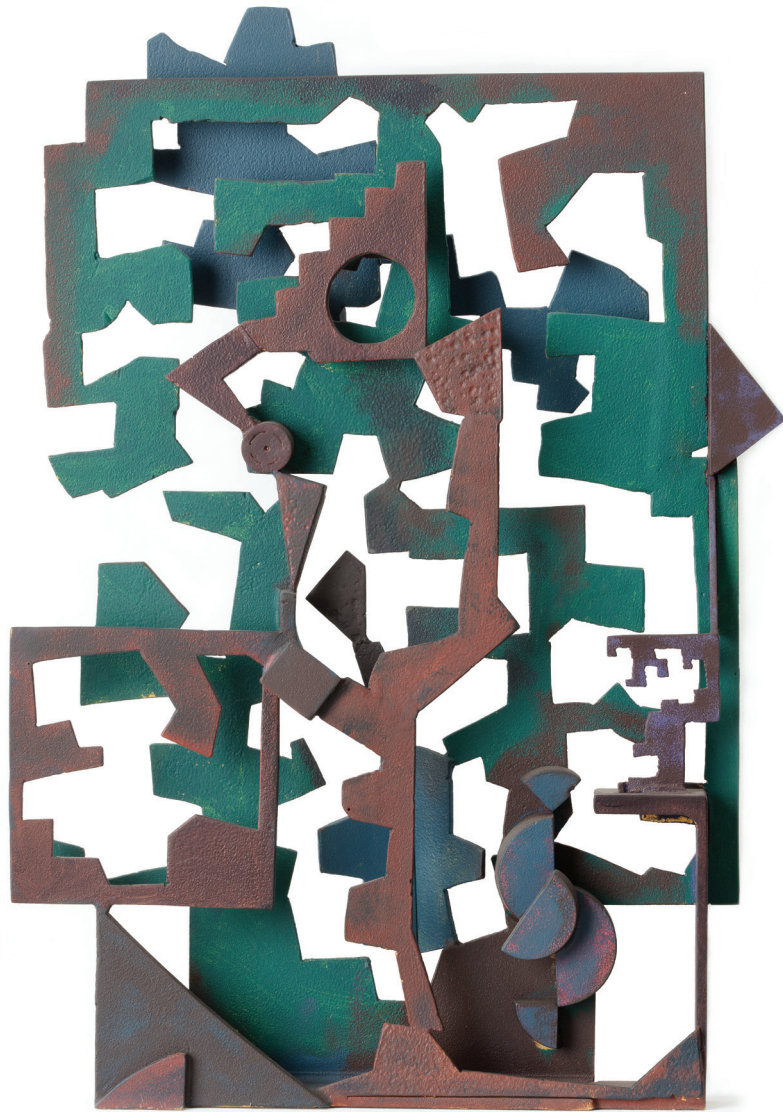
*Upward* 2019 painted & waxed steel 76.5 x 21 x 25 cm



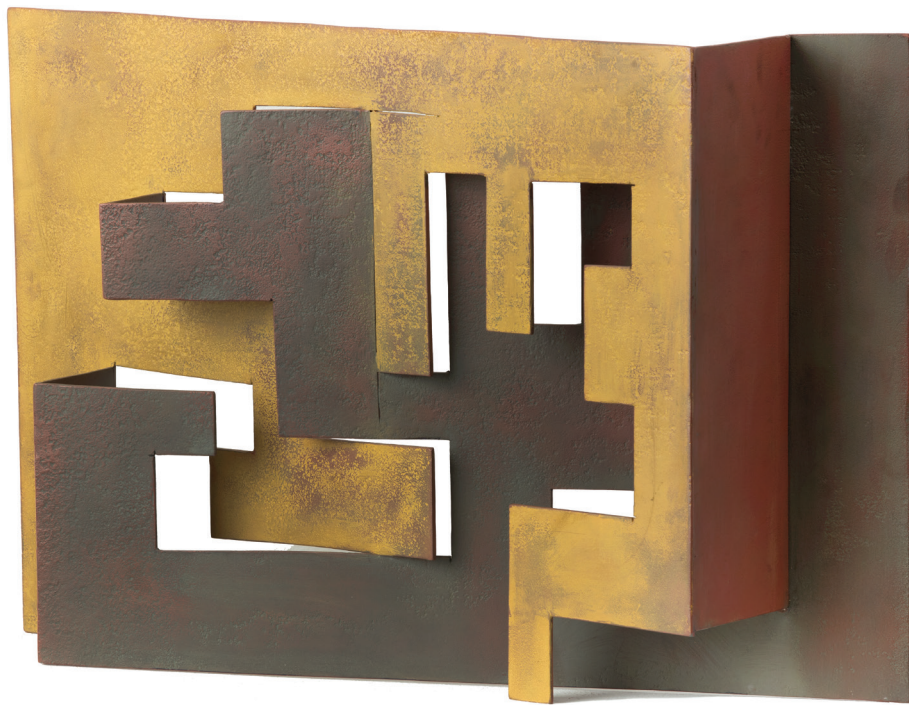
*Verse cube* 2006 waxed steel 24 x 31 x 18 cm



*Wrought idyll* 2005 waxed steel 18 x 13 x 17 cm



*The tree* 2018 painted steel 87.5 x 58 x 14 cm



*Studio windows* 2016 painted steel 40 x 63.5 x 11 cm



*Dingo country* 2015 painted steel 29 x 58 x 16 cm



*A window* 2018 painted steel 53.5 x 28 x 10 cm

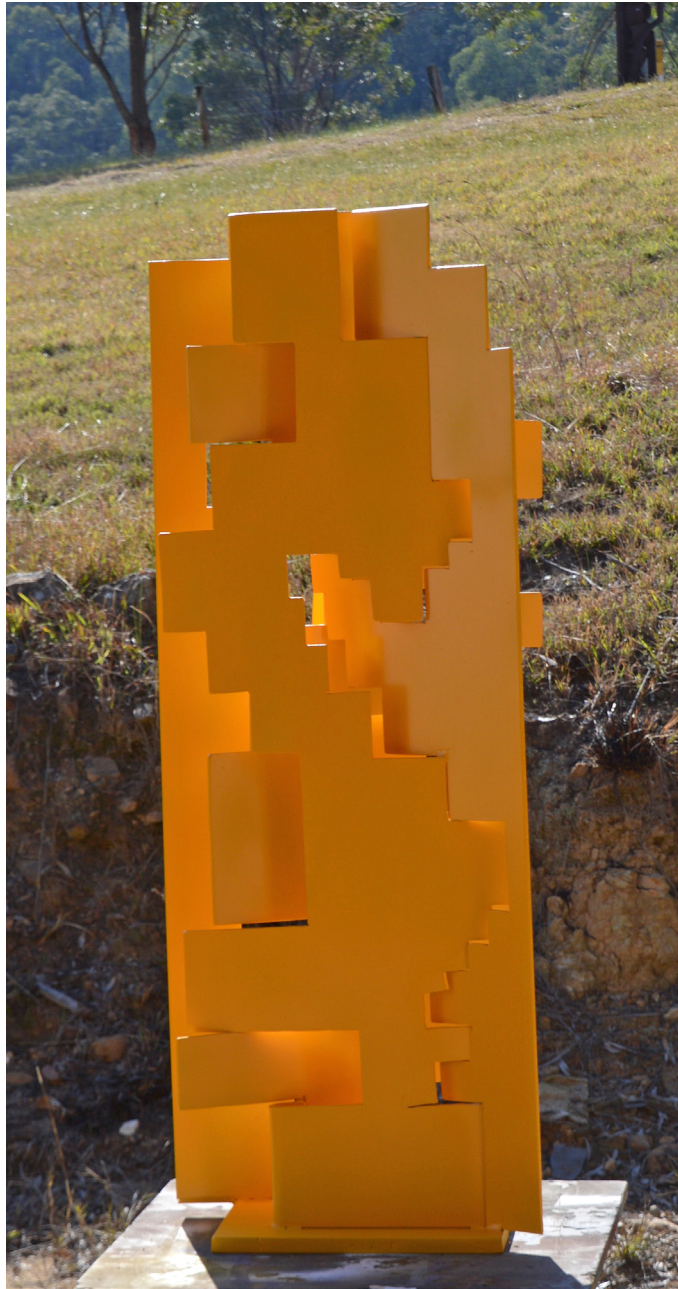




*I carried stones* 2009 mild steel 150 x 70 cm



*A little window* 2008 mild steel 120 x 112 cm



*Sun tower* 2019 painted steel 123 x 45 x 28 cm