

Joanna Logue  
2010



Photo: Frank Lindner

# Joanna Logue

2010

## King Street Gallery

on William

10am – 6pm Tuesday – Saturday  
177 William St Darlinghurst NSW 2010 Australia  
T: 61 2 9360 9727 [kingst@bigpond.com](mailto:kingst@bigpond.com)  
[www.kingstreetgallery.com.au](http://www.kingstreetgallery.com.au)  
Directors: Robert Linnegar and Randi Linnegar

member of  
**acga** australian commercial  
galleries association

Member of the Australian Commercial Galleries Association  
Registered Valuer with the Australian Government Taxations Incentives for the Arts Scheme

Published by King Street Studios P/L 2010  
ISBN: 978-0-9807666-0-8



*Window-I* 2010 Oil on Linen 137 x 198cm





*Winter Gums (Diptych)* 2010 Oil on board 40 x 90cm



*Essington - Window II* 2010 Oil on linen 137 x 198cm



Joanna Logue 2010 Photo: Frank Lindner



*Essington - Paddock II* 2010 Oil on linen 61 x 81cm





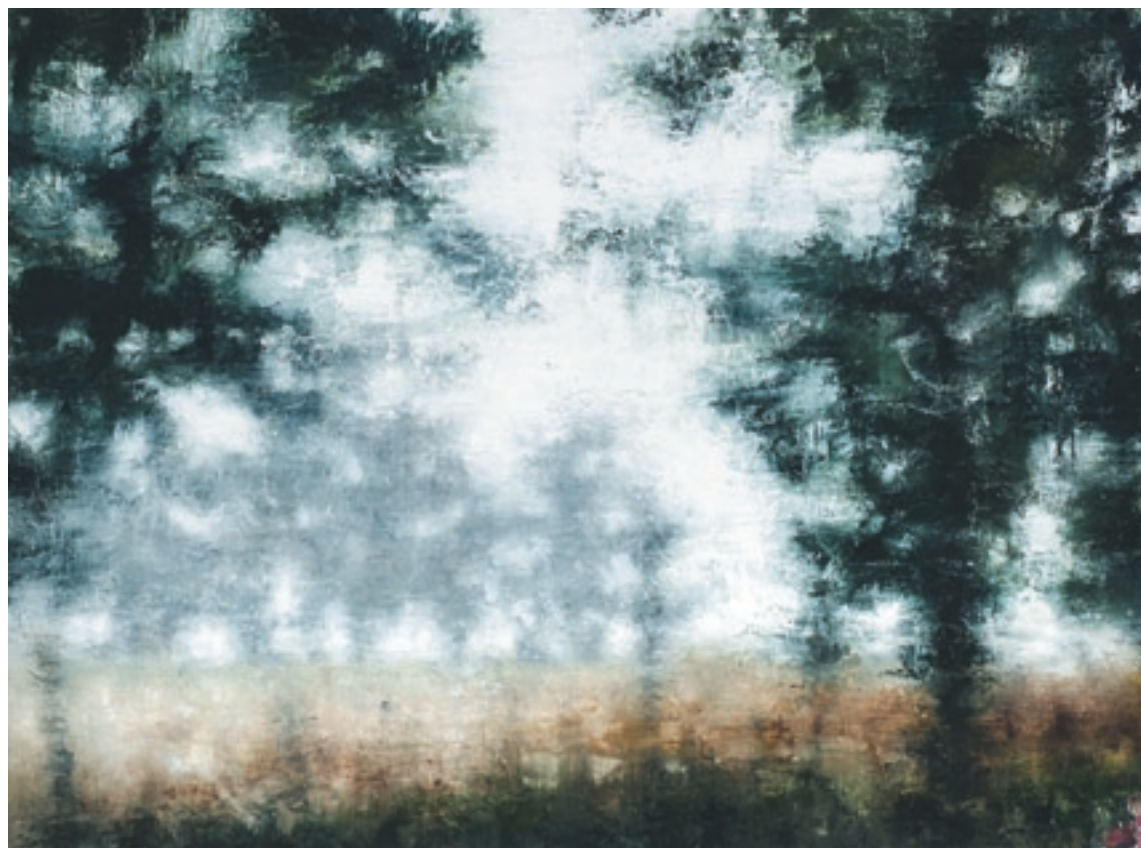
*Essington - Paddock I* 2010 Oil on linen 61 x 81cm



“Life throws up interesting visual surprises. Even if incongruous these visual surprises when incorporated in a formally sound way become an integral part of the picture and speak of the essence or feeling of place.”

Joanna Logue





*Essington - Window VI* 2010 Oil on Board 92 x 122cm



*Window-IV* 2010 Oil on Linen 122 x 183cm





*Window-III* 2010 Oil on Board 120 x 120cm





*Forest – Track* 2010 Oil on canvas 45 x 55cm

Joanna Logue has lived for over 20 years at Essington Park, a property just outside of Oberon, NSW. Past the 150 year old home, past the one room schoolhouse, you glance over to a solitary grave of a child who died in 1863. Down the hill a little – before you reach the donkeys, the chickens and the paddocks stand the conifer and fir trees that are a testament to the beauty of the western plains. Set amongst this partially artificial landscape, sculpted by the hands of generations of farmers and the sheer will of nature is Joanna's studio. In this converted horse stable with large blank white walls and natural light the painting begins.

Joanna is a keenly observant and intellectual painter – stealing the inspiration and beauty offered up to her by the changing seasons; the play of light and shadow upon the landscape; the unpredictable effects of the weather and her photographic memory of minute variations over time. It is not the artist's intent to copy or replicate what she sees – but rather to use these observations as her 'muse;' and translate them into a unique language and image that speaks singularly to each and every viewer. By literally attacking the canvas with layering then scraping back again and again, Joanna reinvigorates her paintings and shows us what we were unable to see ourselves.

King Street Gallery on William 2010



*Essington - Field III* 2010 Oil on linen 122 x 183cm



*Tree Line Study* 2010 Oil on canvas 30x35cm





*Essington - Field I* 2010 Oil on linen 122 x 183cm



*Essington Window VII* 2010 Oil on linen 122 x 183cm

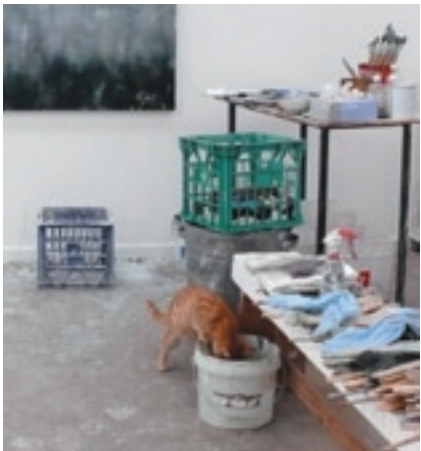


Essington – Field II 2010 Oil on linen 122 x 183cm

# Joanna Logue

**Born**  
 1964 Scone, NSW, Australia  
**Education**  
 1987 Graduate Diploma [Professional Art Studies]  
 City Art Institute, Sydney  
 1984-86 B.A. [Visual Arts] City Art Institute

**Solo Exhibitions**  
 2010 *New Works* King Street Gallery on William, Sydney  
 2009 *New Paintings* acga Gallery @ Fed Square  
 [with King Street Gallery on William]  
 2008 *New Work* Tim Olsen Gallery, Sydney  
 2007 *New Work* Tim Olsen Annex Gallery, Sydney  
 Gadfly Gallery, Perth  
*Glimpse* Bathurst Regional Art Gallery, NSW  
 2006 Tim Olsen Gallery  
 2005 Parks Tim Olsen Annex Gallery  
 2004 Tim Olsen Gallery  
 Axia Modern Art, Melbourne  
 2003 Tim Olsen Gallery  
 2002 Axia Modern Art  
 2001 Axia Modern Art  
 2000 Michael Nagy Fine Art, Sydney  
 Axia Modern Art  
 1999 Michael Nagy Fine Art  
 1998 Axia Modern Art  
 1997 Michael Nagy Fine Art  
 1996 *Vastness* Axia Modern Art  
*Recent Landscapes* Solander Gallery, Canberra  
 1995 *A Time and Place* Editions Galleries, Melbourne





- 1994

*New York City Landscapes – Central Park*  
Solander Gallery
- 1993

*Oberon Painters Gallery*, Sydney
- 1992

*Tidal Marks* Solander Gallery
- 1988

Cooper Gallery, Sydney
- 1987

Cooper Gallery
- Selected Group Exhibitions

2010

*En Plein Air Prize* NSW Parliament House, Sydney
- 2009

*En Plein Air Prize* NSW Parliament House  
*Mosman Art Prize* Mosman Art Gallery, Sydney  
*ANL Maritime Art Prize* Exhibition Melbourne  
*Gosford Art Prize* Gosford Regional Gallery, Gosford  
*Directors Choice* Bathurst Regional Art Gallery, NSW
- 2008

*Greetings from Coogee – Streeton Inspired*  
Mary Place Gallery, Sydney
- 2006

*Beyond Hill End* Cudgegong Gallery, NSW  
Country Energy Prize for Landscape Painting,  
2003  
*Depth of Field* Shepparton Art Gallery, Vic  
2001  
*Decade* Bathurst Regional Art Gallery  
*Five Women* The Bell Gallery, Berrima, NSW
- 2000

Sydney Scene Olympic Arts Festival,  
Michael Nagy Fine Art
- 1992

*North Sydney* Contemporary Gallery, Sydney
- 1990

*New Art 1990* Bonython-Meadmore Fine Art, Sydney
- 1989

*Australian Heritage Award* Blaxland Gallery, Sydney
- 1987

*Australian Textiles Award* Sydney Textiles Museum  
*Post Graduate Exhibition* Ivan Dougherty Gallery,  
COFA, UNSW, Sydney  
*Douglass Art Award* Ivan Dougherty Gallery
- 1986

*Graduating Students Exhibition* City Art Institute, Sydney  
*Nude Show* Gates Gallery, Sydney
- 1985

Seasons Gallery, Sydney



- Awards

1998

Gunnery Studio,  
NSW Gunnery Studios Program
- 2000

Kings Contemporary Art Prize
- 2006

Country Energy Art Prize for  
Landscape Painting
- 2009

Central West Artist Award,  
Cowra Regional Art Gallery
- 2010

Haefliger's Cottage, Hill End Residency,  
Bathurst Regional Art Gallery

Public Commission

World Square Foyer

- Collections

Ampol Collection, Australia

Australian Art Investment Trust

Australian Institute of Management

Australian Metal Holdings Ltd

Australian Property Network

Baker & McKenzie, NSW

Barclays Bank, Australia

Bathurst Regional Art Gallery, NSW

Burns Philip Ltd, Australia

Cornell University, USA

Country Energy, NSW

Fluor Daniel Australia Pty Ltd

Jackson Lalic Lawyers, Sydney

Kurrajong Hotel, ACT

Macquarie Bank, Australia

Mann Judd Pty Ltd, Australia

McKinsey & Co., Australia & New Zealand

Mirvac, Australia



- NRMA, Australia

Parncutt Acton, Australia

Pracom Ltd, Australia

Qantas, Australia

Rand Corporation, Australia

University of New South Wales

Vaughan Construction, Australia

Walker Corporation Ltd

WT Partnership, Australia

### Selected Bibliography

- 2010 'Water: Australia Day 2010,' The Age, Jan 26, front page pullout
- 2009 Beverage, Ann: 'A Brush With Nature,' Blue Mountains Life Magazine, Oct- Nov, p40
- 2007 Hetherington, Sarah: 'Joanna Logue,' Art World Magazine, Oct/Nov, pp142-145  
Newstead, Adrian: 'Greetings from Coogee,' Catalogue Essay
- 2006 Winner's Profile, Countryscapes, Country Energy (website)  
Country Energy Art Prize for Landscape Painting, Countryways, Nov/Dec/Jan, p4  
Musa, Helen: 'Oberon artist's brush with Braidwood pays dividends,' The Canberra Times, Oct 13, p4
- 2005 Jones, Julia: 'Regional art hotties: Out There,' Australian Art Review, Iss 07 Mar-June, pp47-48
- 2002 Tegar, Louise & Hall, Karen: 'Joanna Logue,'  
Depth of Field-Catalogue Essay: Shepparton Art Gallery, pp28-29
- 2001 Bock, Ilana: 'A Case of Reputation,' Australian Art Collector, Iss 17, July-Sept, p96
- 2000 Makin, Jeff: Arts Review, Melbourne Sunday Herald  
Smee, Sebastian: Arts Review, The Sydney Morning Herald
- 1999 Ed. Drury, E.: 'Images 3' published by Craftsman House
- 1997 Auty, Giles: Art Review, The Weekend Australian  
James, Bruce : Arts Review, Sydney Morning Herald
- 1996 Art Review, The Australian Financial Review  
Art Review, Canberra Times  
'Images 2' published by Craftsman House
- 1994 Arts Review, Canberra Times, July 6
- 1992 Arts Review, Canberra Times, Aug 12





# King Street Gallery

on William

10am – 6pm Tuesday – Saturday

177 William St Darlinghurst NSW 2010 Australia

T: 61 2 9360 9727 [kingst@kingstreetgallery.com.au](mailto:kingst@kingstreetgallery.com.au)

[www.kingstreetgallery.com.au](http://www.kingstreetgallery.com.au)

Directors: Robert Linnegar and Randi Linnegar



Member of the Australian Commercial Galleries Association

Registered Valuer with the Australian Government Taxations Incentives for the Arts Scheme

Published by King Street Studios P/L 2010

ISBN: 978-0-9807666-0-8